

Incarceration Trends in ALASKA

Incarceration in Local Jails and State Prisons



REGIONAL RANK

1 of 5 in total incarceration

Total people...

...locked up in Alaska



712 people

5,338 people

1978

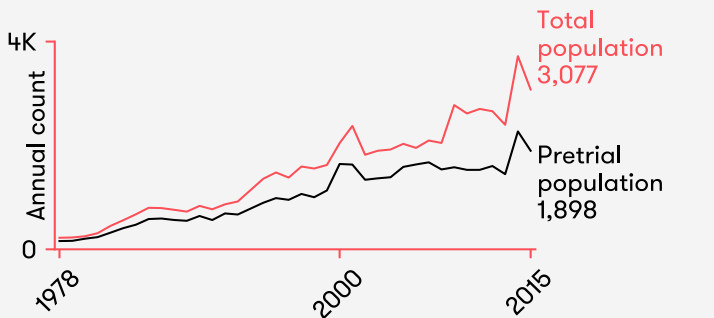
2015

Since 1970, the rate of incarceration in America has expanded more than fourfold, and the United States leads the world in locking people up. Many places in America have begun to reduce their use of prisons and jails, but progress has been uneven. Although the number of people sent to state prisons and county jails from urban areas has decreased, that number has continued to rise in many rural places. Racial disparities in incarceration remain strikingly wide. Women constitute a rising number of those behind bars.

This fact sheet provides at-a-glance information about how many people are locked up in both state prisons and county jails and shows where the state stands on a variety of metrics, so that policymakers and the public can better determine where to target reforms.

STATE TOTALS

JAILS*



% change in jail population

SINCE 1970

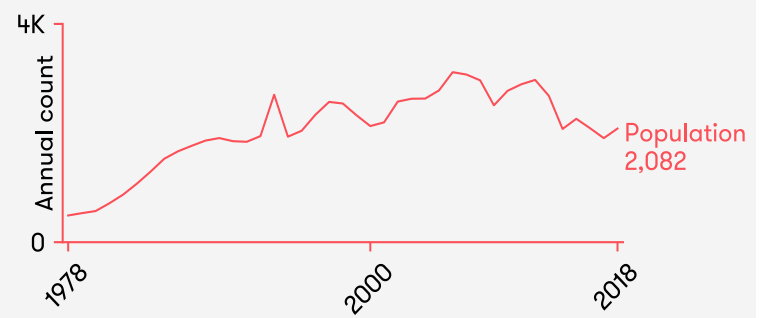
SINCE 2000

1,286% ↑

50% ↑

Since 1978, the total jail population has increased 1,286%. In 2015, pretrial detainees constituted 62% of the total jail population in Alaska.

PRISONS



% change in prison population

SINCE 1983

SINCE 2000

325% ↑

-2% ↓

Since 1978, the prison custody population has increased 325%. In 2018, there were 2,082 people in the Alaska prison system.

RACE

more on pg 2 →

TOTAL INCARCERATION 2015

4% of state pop. | 10% of incarcerated pop.



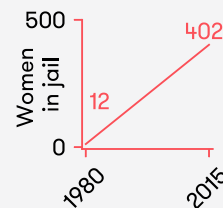
In Alaska, Black people constituted 4% of state residents, but 10% of the incarcerated population.

GENDER

more on pg 2 →

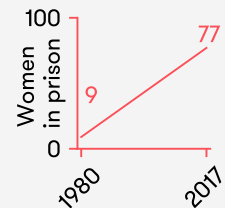
JAILS*

3,250% ↑



PRISONS

756% ↑



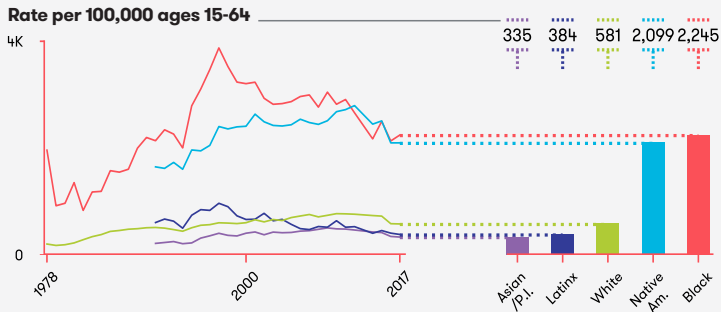
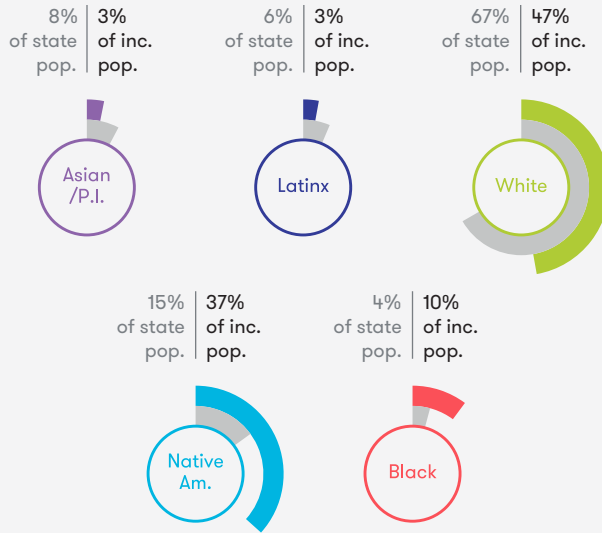
Since 1980, the number of women in jail has increased 3,250%, and the number of women in prison has increased 756%.

RACE AND ETHNICITY



TOTAL INCARCERATION

2017



Since 1978, the Black incarceration rate has increased 14 percent. In 2017, Black people were incarcerated at 3.9 times the rate of white people, and Native American people were incarcerated at 3.6 times the rate of white people.

NATIONAL CONTEXT

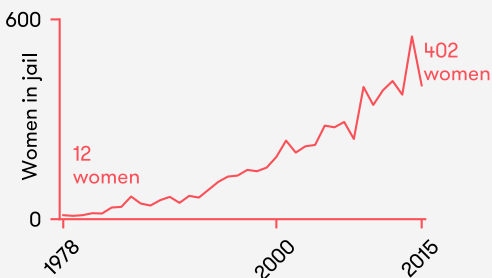
The overrepresentation of Black Americans in the justice system is well documented. Black men constitute about 13 percent of the male population, but about 35 percent of those incarcerated. One in five Black people born in 2001 is likely to be incarcerated in their lifetime, compared to one in 10 Latinx people and one in 29 white people.

Discriminatory criminal justice policies and practices at all stages of the justice process have unjustifiably disadvantaged Black people, including through disparity in the enforcement of seemingly race-neutral laws. Studies have found that Black people are more likely to be stopped by the police, detained pretrial, charged with more serious crimes, and sentenced more harshly than white people—even when controlling for things like offense severity.

Nationally, Latinx people are also overrepresented in prisons and jails, yet common data misclassification leads to distorted, lower estimates of Latinx incarceration rates and distorted, higher estimates of white incarceration rates. Smaller and inconsistent data reporting make it difficult to measure the effects of racism for incarcerated people of other racial groups.

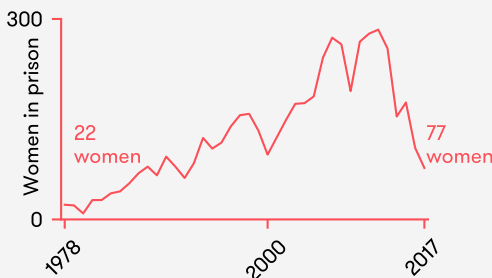
GENDER

JAILS*



The number of women in Alaska's jails has increased more than 24-fold, from 12 in 1978 to 296 in 2016.

PRISONS



The number of women in Alaska's prisons has increased more than threefold, from 22 in 1978 to 77 in 2017.

NATIONAL CONTEXT

Although men's jail admissions have declined by 26 percent since 2008, women's admissions have increased both as a total number and as a proportion of all jail admissions. Women now make up almost one out of every four jail admissions, up from fewer than one in 10 in 1983. Since 1970, the number of women in U.S. jails has increased 14-fold—from fewer than 8,000 to nearly 110,000 in 2013—and women in jail now account for approximately half of all women behind bars in the country.

JAILS*



Jail admissions

Rank	State	Rate (2015)	Rate change ('05-'15)
1	Oregon	6,568	-7%
2	Washington	4,422	-27%
3	California	3,830	-26%
4	Alaska	838	38%
5	Hawaii	169	-12%

Jail pretrial population

Rank	State	Rate (2015)	Rate change ('05-'15)
1	Alaska	373	10%
2	California	155	-30%
3	Oregon	137	-10%
4	Washington	127	-12%
5	Hawaii	115	-6%

Jail sentenced population

Rank	State	Rate (2015)	Rate change ('05-'15)
1	Alaska	231	1%
2	California	138	0.3%
3	Hawaii	113	0.5%
4	Oregon	80	-0.3%
5	Washington	78	-0.5%

PRISONS

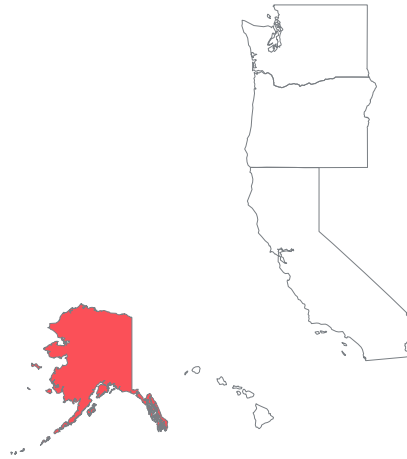


Prison admissions

Rank	State	Rate (2016)	Rate change ('06-'16)
1	Oregon	190	-14%
2	Washington	154	-16%
3	California	136	-76%

Prison population

Rank	State	Rate (2018)	Rate change ('08-'18)
1	Oregon	569	2%
2	California	489	-29%
3	Alaska	416	-31%
4	Washington	393	-1%
5	Hawaii	382	-20%



Data This fact sheet uses data from four U.S. Bureau of Justice Statistics (BJS) data series and is supplemented with data obtained directly from state governments for the more recent years for which BJS data is not yet available, when available. The Annual Survey of Jails, Census of Jails, and National Corrections Reporting Program provides data through 2016; the National Prisoner Statistics program provides data through 2017, and 2018 data is sourced from state agencies. Alaska does not have local jails, and instead uses a “unified” corrections system whereby the state administers facilities that hold people in both pretrial and sentenced status. The “jails” data in this document includes people in pretrial status and with sentences of 1 year or less. Rates are per 100,000 residents aged 15 to 64. See *Data and Methods for Vera’s State Fact Sheets*: www.vera.org/incarceration-trends-fact-sheets-data-and-methods.pdf for complete details. County-level data is available at trends.vera.org.

Acknowledgments

This series would not be possible without the excellent work of researchers at the Bureau of Justice Statistics—E. Ann Carson, Todd Minton, and Zhen Zeng—who maintain the Annual Survey of Jails, Census of Jails, National Corrections Reporting Program, and National Prisoner Statistics program. This report was designed by Paragini Amin and created by Christian Henrichson, Eital Schattner-Elmaleh, Jacob Kang-Brown, Oliver Hinds and James Wallace-Lee. This report was made possible by the support of Arnold Ventures. The views expressed in this report are those of the authors and do not necessarily reflect the views of Arnold Ventures.

Credits

© Vera Institute of Justice December 2019. All rights reserved.

An electronic version of this report is posted on Vera’s website at www.vera.org/state-incarceration-trends. The Vera Institute of Justice is a justice reform change agent. Vera produces ideas, analysis, and research that inspire change in the systems people rely upon for safety and justice, and works in close partnership with government and civic leaders to implement it. Vera is currently pursuing core priorities of ending the misuse of jails, transforming conditions of confinement, and ensuring that justice systems more effectively serve America’s increasingly diverse communities.

For more information

For more information, visit www.vera.org. For more information about this fact sheet, contact Jacob Kang-Brown, senior research associate, at jkangbrown@vera.org.